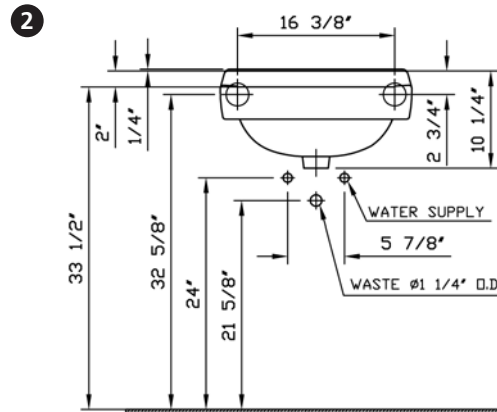
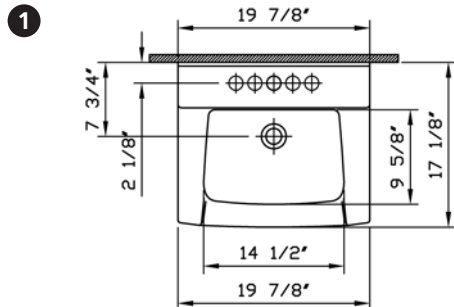


# Commercial Line

VitrA



<b>Description</b>	: Wall Mount Lavatory, ADA compliant
<b>Model Numbers</b>	: 5406-XXX-0001 Single-hole faucet drilling 5406-XXX-0030 4" faucet drilling 5406-XXX-0033 8" faucet drilling
<b>Size</b>	: 19 7/8" x 17 1/8"
<b>Height</b>	: 33 1/2"
<b>Depth</b>	: 8 1/4"
<b>Waste</b>	: Ø1 1/4" O.D.
<b>Shipping Weight</b>	: 31 lbs.
<b>Shipping Dimensions</b>	: 22 2/8"W x 13 6/8"L x 20"H
<b>Installation Guide</b>	: VitrA Guide # 312852
<b>Included Components:</b>	Wall hung lavatory mounting bracket (312568)
<b>Material</b>	: Vitreous china
<b>Colors</b>	: 003 White 017 Bone, 068 Biscuit (Basic Colors) "XXX" indicates the color
<b>Warranty</b>	: 10 year limited warranty



**Notes:**

- COMPATIBLE WITH ARM CARRIER OF ZURN MODEL Z1254.
  - DIMENSIONS SHOWN FOR THE LOCATION OF THE SUPPLY IS SUGGESTED.
  - INSTALLATION INSTRUCTIONS SUPPLIED WITH THE LAVATORY.
  - FITTINGS ARE NOT INCLUDED
  - PROVIDE SUITABLE REINFORCEMENT FOR ALL WALL SUPPORTS.
  - CONCEALED ARM CARRIER NOT SUPPLIED BY VITRA. SUPPLIED BRACKET NOT USED WITH CONCEALED ARM CARRIER.
- IMPORTANT:** Dimensions of fixtures are nominal and may vary within the range of tolerances established by ASME Standard A 112.19.2, CSA Standard B45 and ICC/ANSI Standard A 117.1. These measurements may be subject to change. No responsibility is assumed for the use of superseded or voided pages.

September, 2008